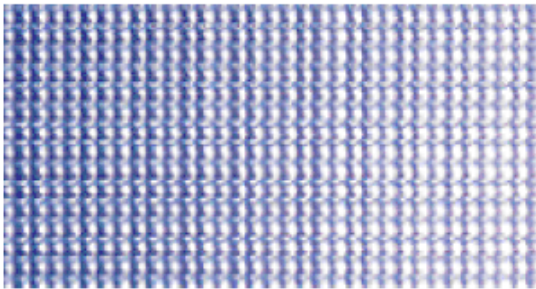


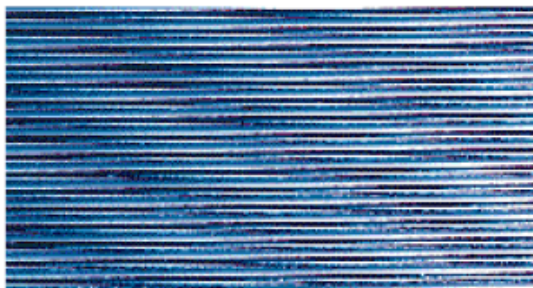
**PATTERNS**



Crystal #73 (Prismatic) Thickness Available 5/32"



Solite (Softening) Thickness Available 1/8"



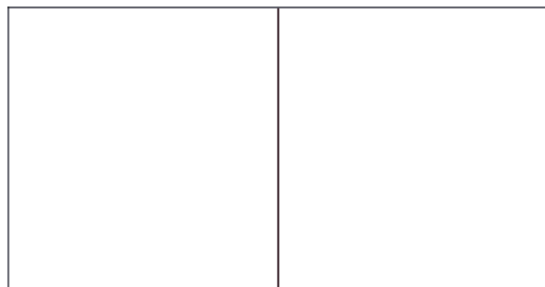
Skytex (Linear) Thickness Available 5/32"



Industrex (Diffusion) Thickness Available 5/32", 3/16"



P62 (Obscure) Thickness Available 1/8", 5/32", 3/16"



White Flashed Opal (35% Transmission)

Sandblasted (Frosted) (70% Transmission)

Thickness Available 1/8", 3/16"

**CLEAR GLASSES - Thickness Range**

- Soda-Lime\* .02" – 1"
- ClearView™\* 1/8" – 3/4"
- Borofloat® (Pyrex®)\* 1/6" – 2"

\* See data sheets for more technical details.

**ORDERING INFORMATION**

Choose from stock sizes for MR-(1.965" diam), MR-11 (1.370" diam), and Par fixtures. However, virtually any shape or size can easily and quickly be fabricated to meet your specific needs.

Fabrication services, cutting, polishing, hole drilling, sandblasting, and tempering.

If you wish to receive Abrisa's Designer's Lighting Book, which contains samples of many of the stock filters and patterns available, call for information.